



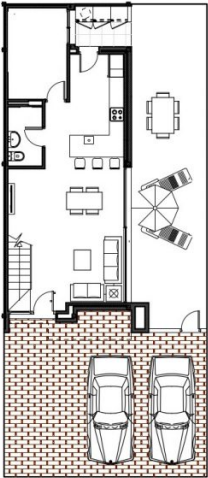
This semi-detached new-build villa is part of 12 homes that are currently under construction and of which the last 4 homes will be delivered at the end of 2021. The house is divided over 2 floors. On the ground floor there is a lounge with dining area which offers direct access to the terrace, a modern fully equipped kitchen, a double bedroom and a bathroom. On the first floor there are 2 spacious double bedrooms with bathroom en suite. The future buyer has the option of enlarging the salon on the ground floor by eliminating the double bedroom. Instead of the bathroom, the house offers a guest toilet. This semi-detached house also offers a beautiful spacious roof terrace from where you have a beautiful view of the Montgo.



Ref: 00147266

311,000 €

Tossal Gross (Denia)



CALLE



CUADRO DE SUPERFICIES		
SUBPARCELA 3.3.21		
Ocupación Vivienda		65,80 m ²
Zona Acceso y Parking		11,00 m ²
Césped		40,20 m ²
TOTAL SUPERFICIE PARCELA		157,00 m²
VIVIENDA		
VIVIENDA	38,50 m ²	65,80 m ²
TERRAZA CUBIERTA	2,30 m ²	
PLANTA ALTA	53,70 m ²	62,70 m ²
TERRAZA DESCUBIERTA	5,00 m ²	
CUBIERTA	1,00 m ²	47,58 m ²
TERRAZA DESCUBIERTA	25,60 m ²	
Césped	16,50 m ²	